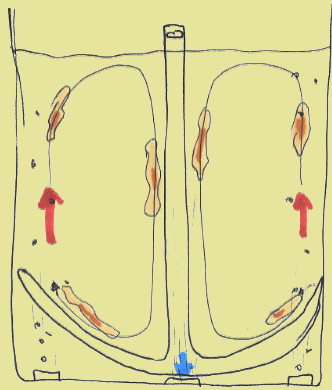
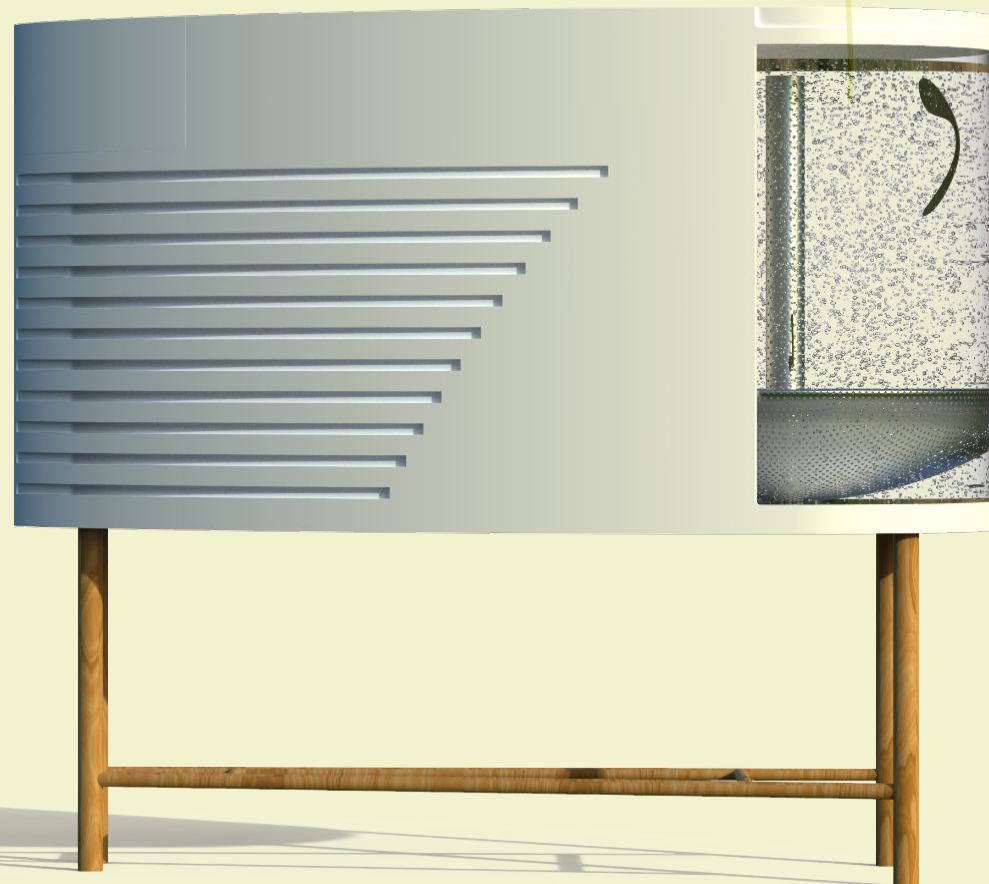


Float Concept

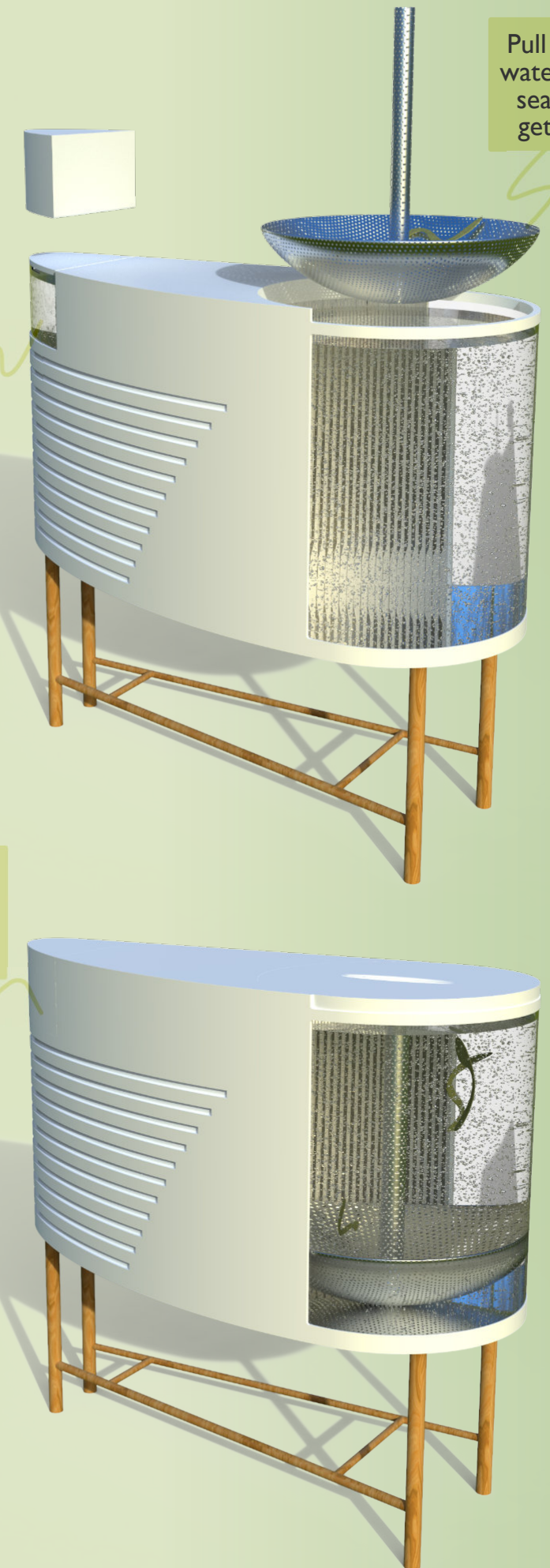


Air and water blown in round edges and suction down the middle to create a convection like circulation



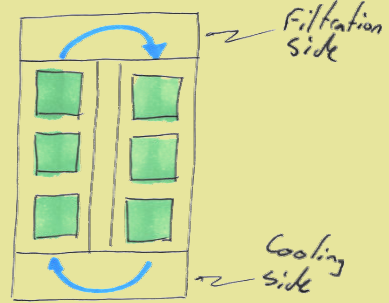
Side tank where the reproduction would occur

Side tank cover to provide conditions needed for reproduction

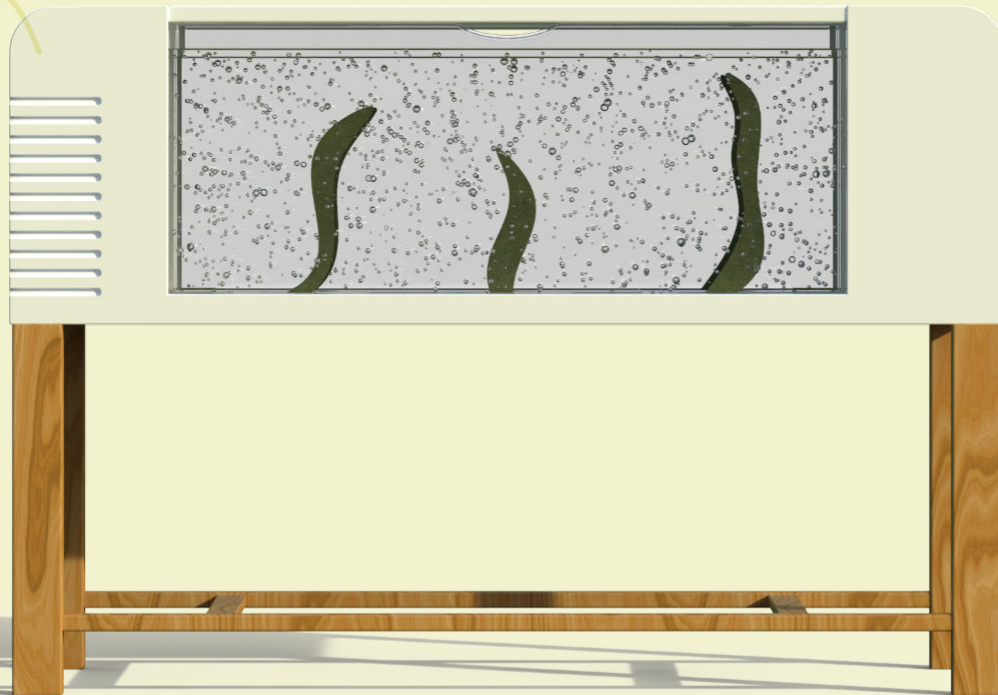


Pull up to drain off water and to access seaweed without getting hand wet

Bottom-up Concept



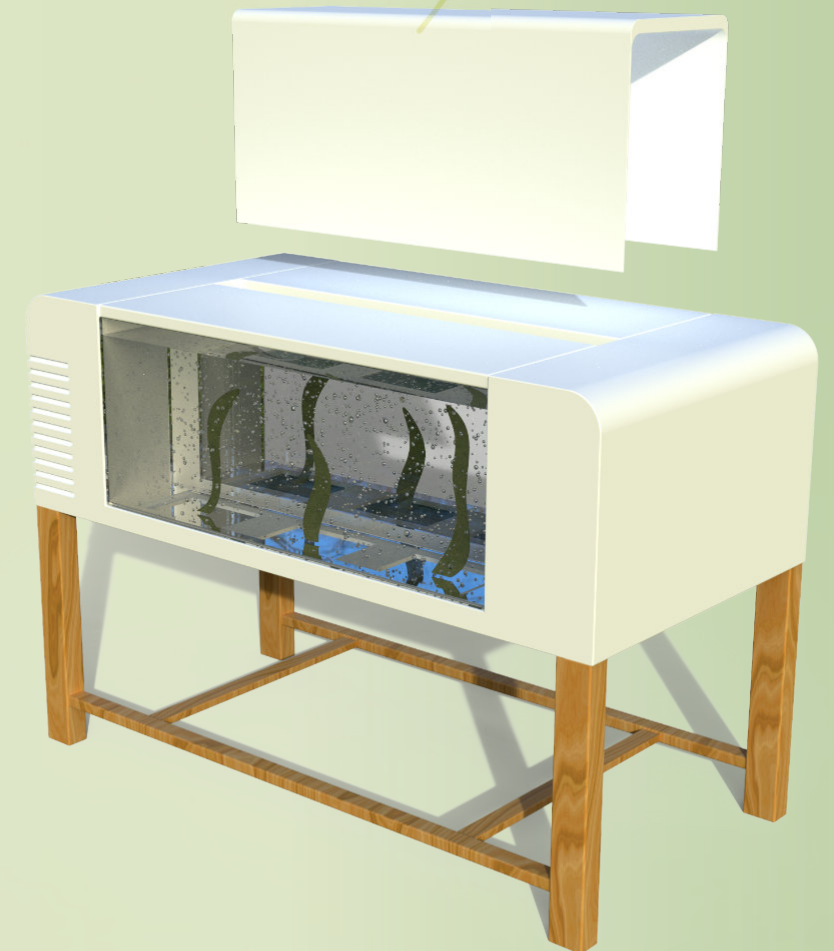
Flowing water round different sections to do the different tasks needed inside the tank. Six sponges create the anchor point for the seaweed



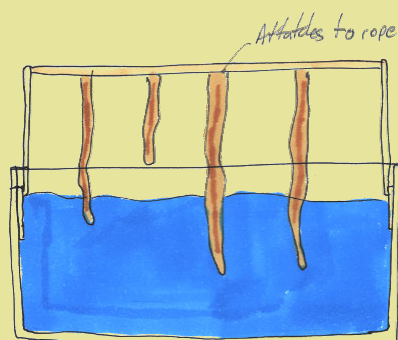
Grows bottom-upwards to grow in direction of air bubbles, keeping it floating



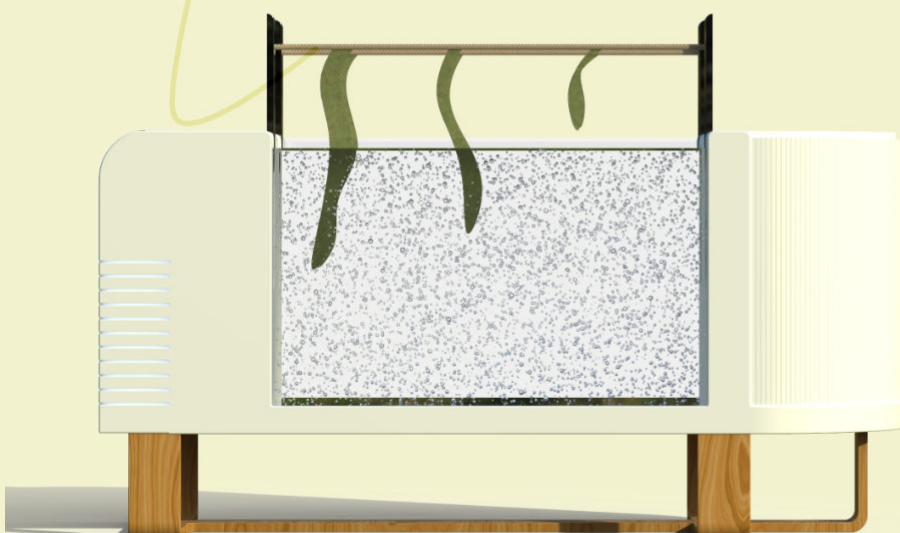
Cover to provide correct conditions during reproduction



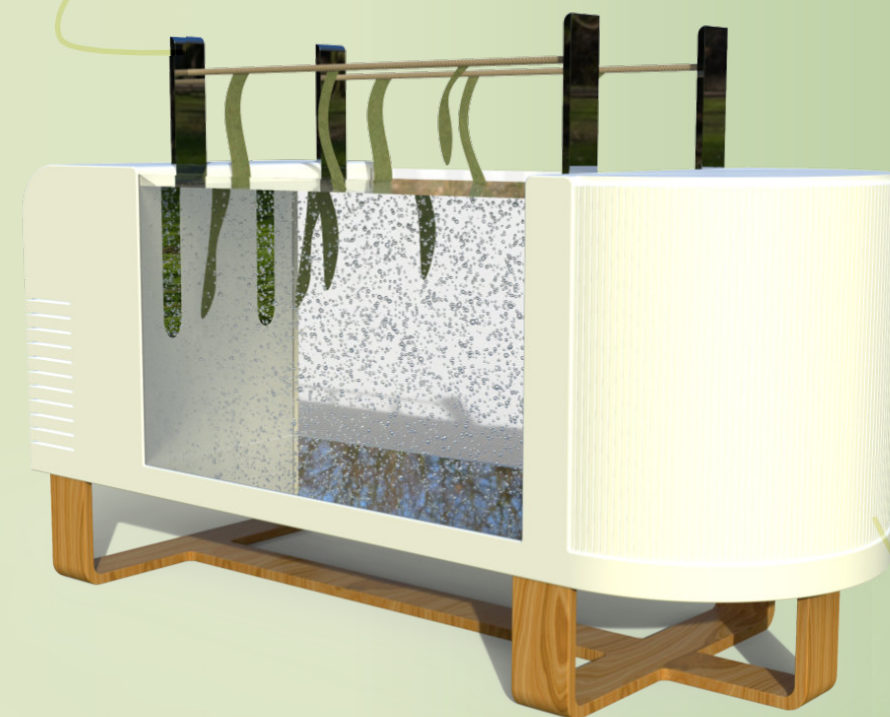
Hanging Concept



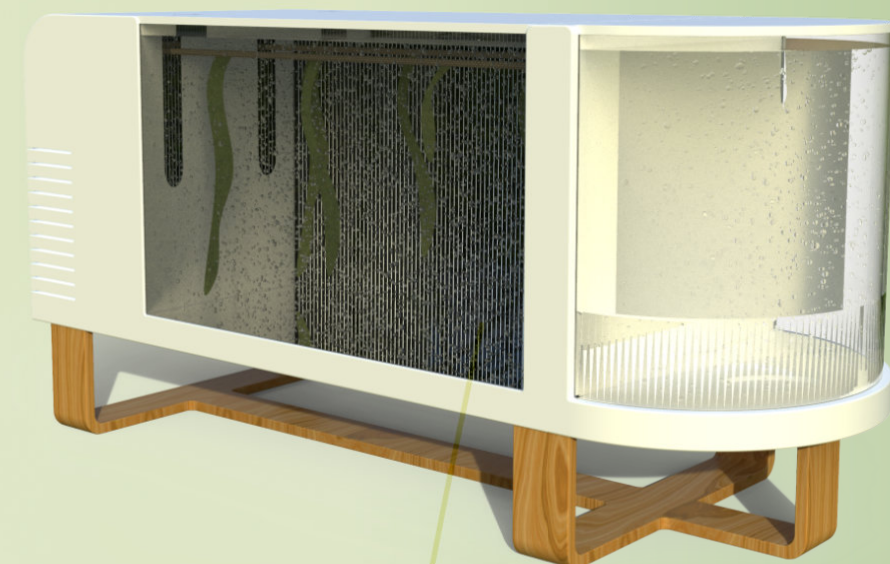
Hangs on rope and gets pulled up to access the seaweed. Tank line will be used as reference point of where to cut it off



Pulls up to access the Seaweed



Tambour doors to block light from reproduction side



Tambour door Moved round to the back for 14 days while the growing organism on the rope is in the rounded compartment but can't be aerated due to necessary conditions